



FIDELITY
COMMERCIAL

FOR LEASE

**GREAT
LOCATION!**

**31 E. BUTLER AVENUE
AMBLER, PA 19002**



Property Highlights

- **Space Available:**

1,849 RSF First Floor Office or Retail
Open floor plan with kitchen

1,280 RSF Lower Level Office or Retail
Two offices with open office and storage

- Parking available at building
- Within two blocks of the train station
- Great location at a signalized intersection surrounded by restaurants and small businesses
- Attractive lease rate

For More Information Contact:

Tom Coyne, Jr.

tcoynejr@fcrea.com

(610) 878-2220

No warranty or representation, expressed or implied, is made as to the accuracy of the information contained herein, and same is submitted subject to errors, omissions, change of price, rental or other conditions, withdrawal without notice, and to any special listing conditions, imposed by our principals.

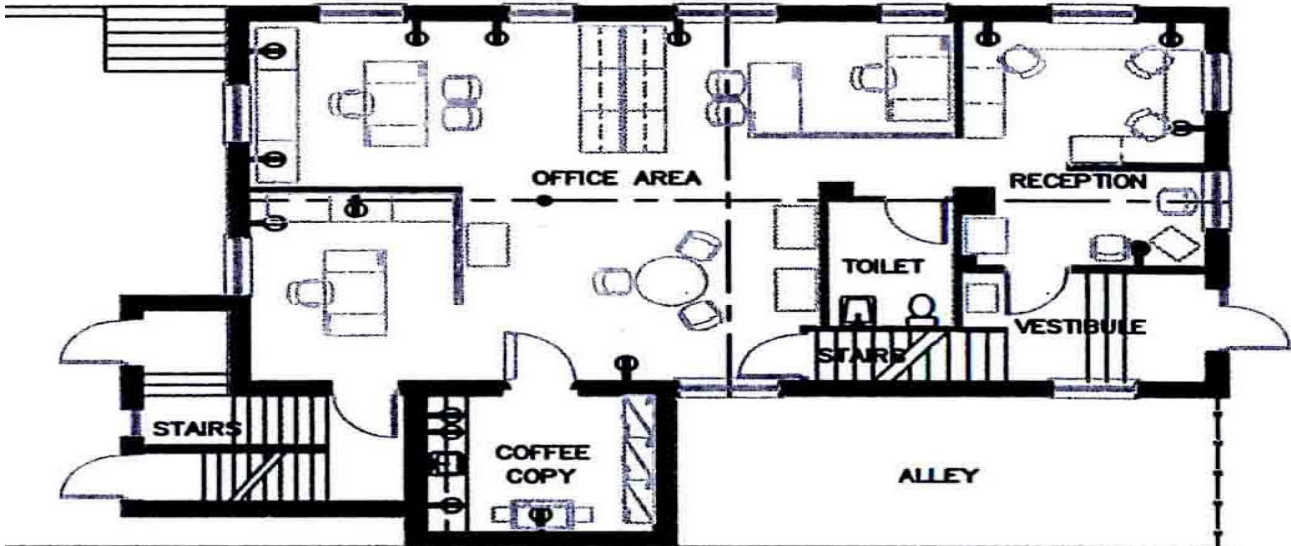
1012 W 9th Ave, Suite 205 • King of Prussia, PA 19406
Phone: 610-878-2220 • Fax: 610-878-2222
www.fcrea.com



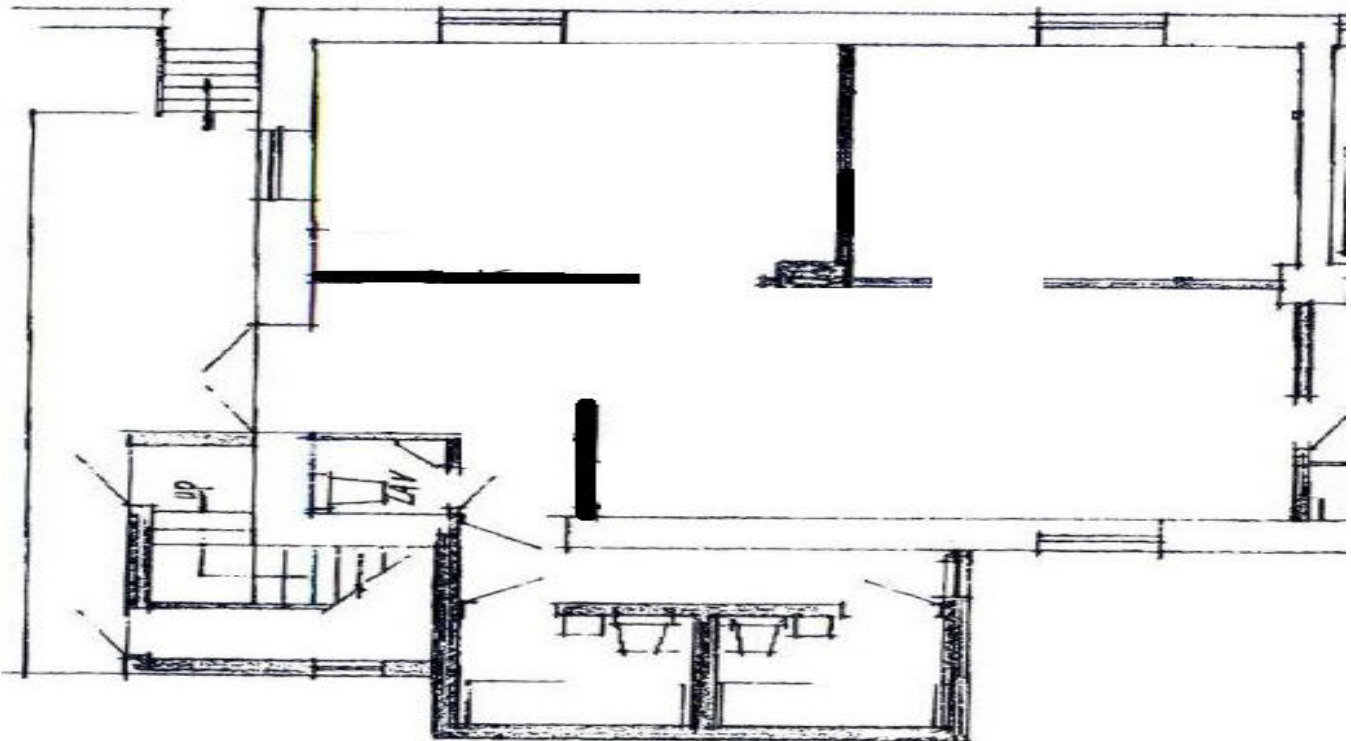
FIDELITY
COMMERCIAL



NORTH SPRING GARDEN STREET



ADJACENT BUILDING



No warranty or representation, expressed or implied, is made as to the accuracy of the information contained herein, and same is submitted subject to errors, omissions, change Of price, rental or other conditions, withdrawal without notice, and to any special listing conditions, imposed by our principals.