

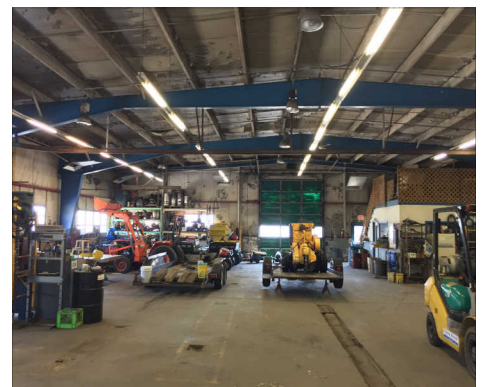


FIDELITY
COMMERCIAL

FOR SALE

**3.78 ACRES ON RT. 30
2825 E LINCOLN HWY
THORNDALE, PA 19320**

**GREAT
LOCATION!**



Property Highlights

- Building Size: 15,267 SF (approx.)
- Acreage: 3.78 Acres (approx.)
- Zoning: TV-1 (Caln Township)
- Traffic Count: 30,000 + cars daily (approx.)
- Showroom, garage, warehouse space with outside storage
- Over 440' of frontage on Rt. 30 in Thorndale
- Asking Price: \$1,925,000

For More Information Contact:

Tom Coyne, Jr.
tcoynejr@fcrea.com

(610) 878-2220

No warranty or representation, expressed or implied, is made as to the accuracy of the information contained herein, and same is submitted subject to errors, omissions, change of price, rental or other conditions, withdrawal without notice, and to any special listing conditions, imposed by our principals.

1012 W 9th Ave Suite 205 • King of Prussia, PA 19406
Phone: 610-878-2220 • Fax: 610-878-2222
www.fcrea.com



FIDELITY
COMMERCIAL

